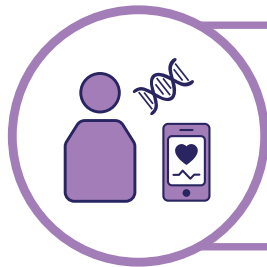


# All of Us Research: How it Works



**1. Participants share their data** with the *All of Us* Research Program through multiple sources. These data are sent to a secure cloud environment, managed by the Data and Research Center.



**2. Participant data** is received and funneled through a **curation pipeline\*** within a secure repository that connects to the Research Hub tools.  
**\*[researchallofus.org/data-tools/data-sources](https://researchallofus.org/data-tools/data-sources)**



**3. Anyone can visit the Research Hub** to learn more about the types of data *All of Us* makes available for research. The **Survey Explorer**<sup>1</sup> and **Data Browser**<sup>2</sup> offer more information about the unique data elements and let visitors browse aggregated participant data.

<sup>1</sup> [researchallofus.org/data-tools/survey-explorer](https://researchallofus.org/data-tools/survey-explorer)

<sup>2</sup> [databrowser.researchallofus.org](https://databrowser.researchallofus.org)



**4. Researchers register\*** for access to the Research Workbench to analyze data.  
**\*[researchallofus.org/register](https://researchallofus.org/register)**



**5. Registered researchers** in the Researcher Workbench can create research projects using collaborative workspaces, cohort-building tools, interactive notebooks, and more.



**6. Research underway** can be viewed on the **Projects Directory**.<sup>1</sup> Publications related to *All of Us* Research Program data are posted on the **Publications page**.<sup>2</sup>

<sup>1</sup> [researchallofus.org/research-projects-directory](https://researchallofus.org/research-projects-directory)

<sup>2</sup> [researchallofus.org/publications](https://researchallofus.org/publications)

Visit **[ResearchAllofus.org](https://ResearchAllofus.org)** to learn more.